

## Hand control



## Control panel



Raise the stretcher.



Lower the stretcher.



Raise the backrest.



Lower the backrest.

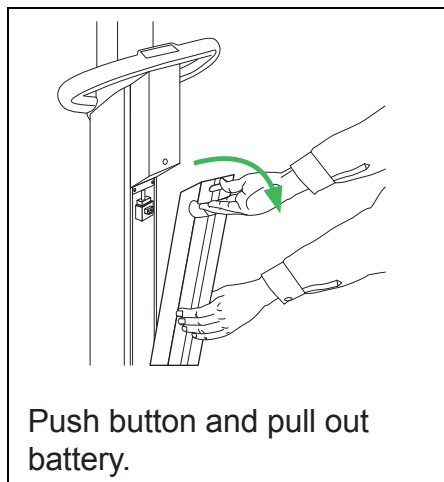


Apply the central brake.  
Flashing light = brakes activated

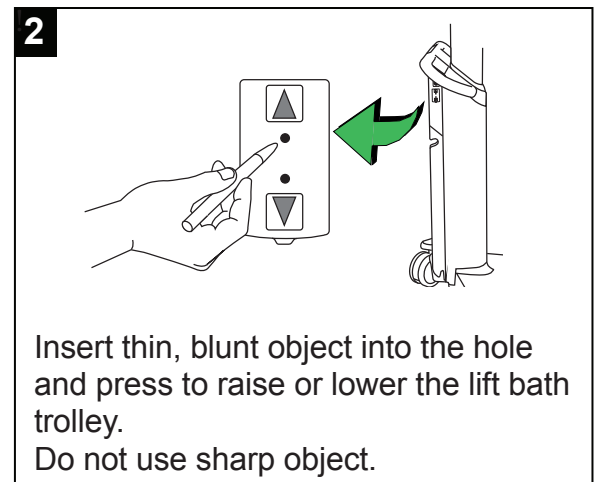
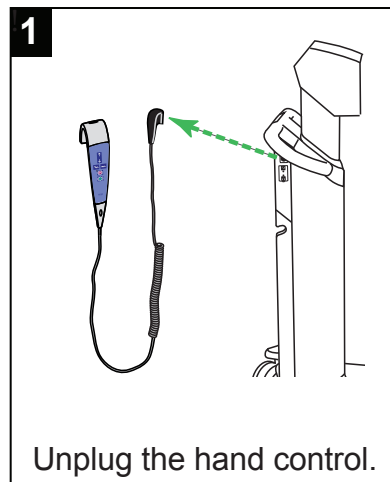


Release the central brake.

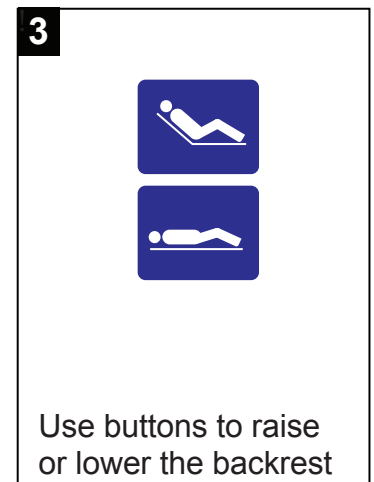
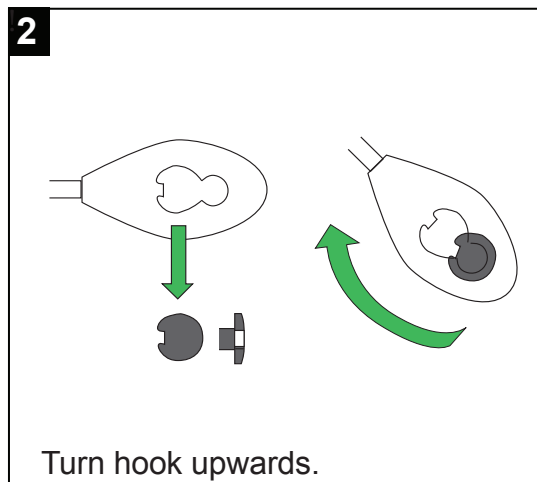
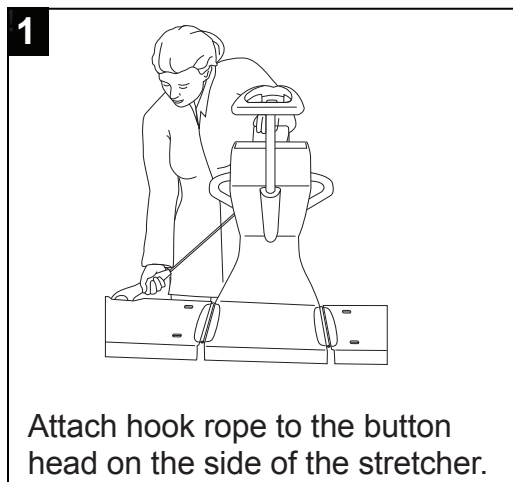
## Emergency stop



## Emergency high/low

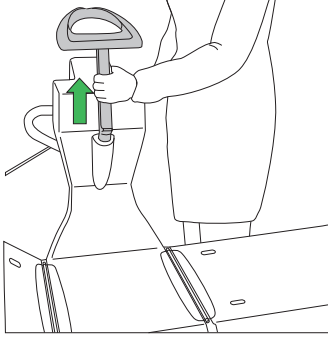


## Backrest and hook rope



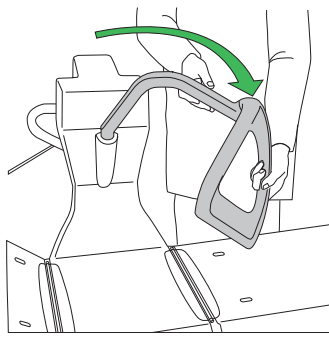
## Side guard and patient security grip

1



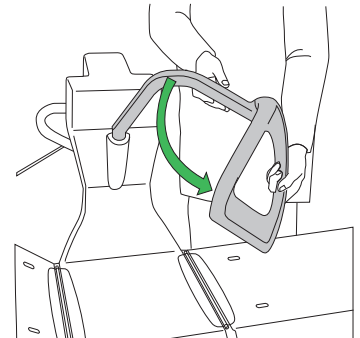
Lift handle upwards.

2



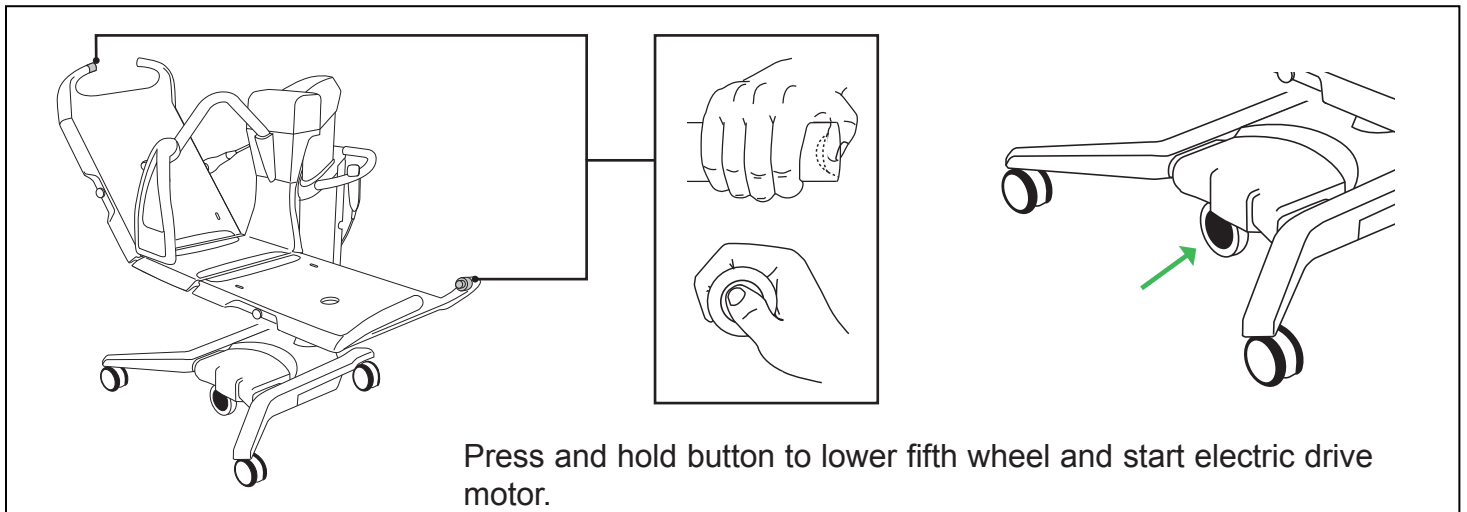
Lower handle away from patient's head.

3



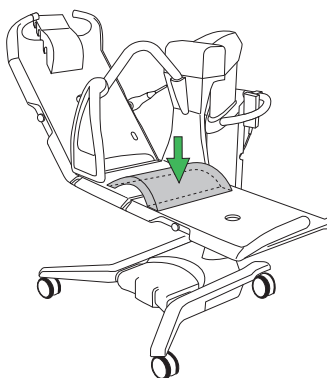
Position the side guard.

## Power drive



## Thigh support cushion

To attach



To remove

