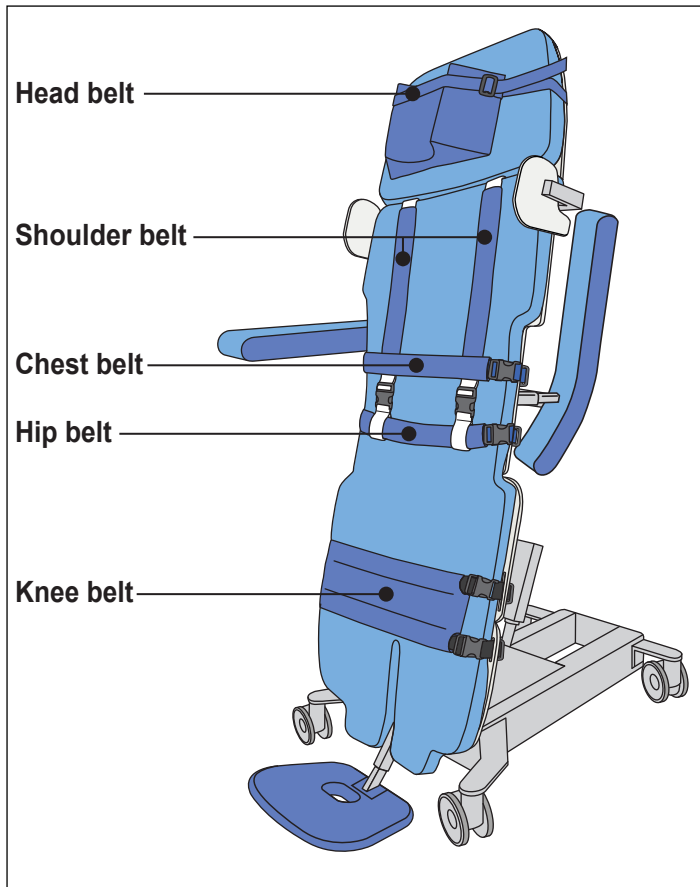


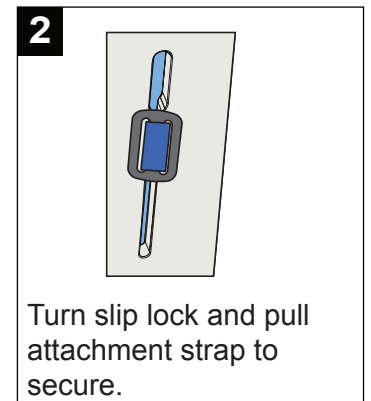
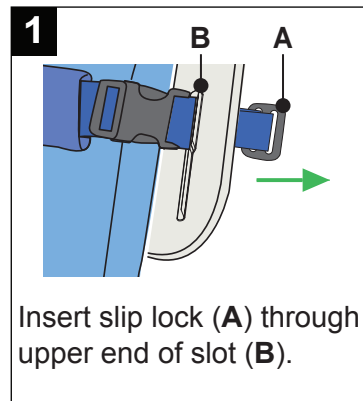
Sara Combilizer



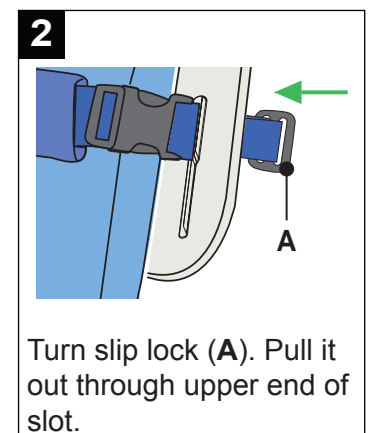
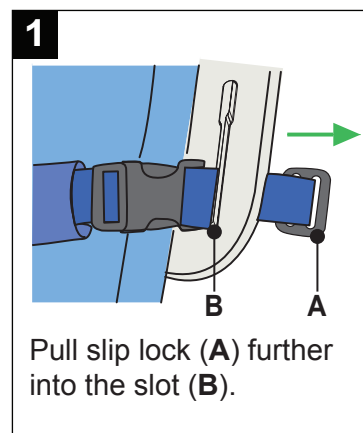
Safety belts



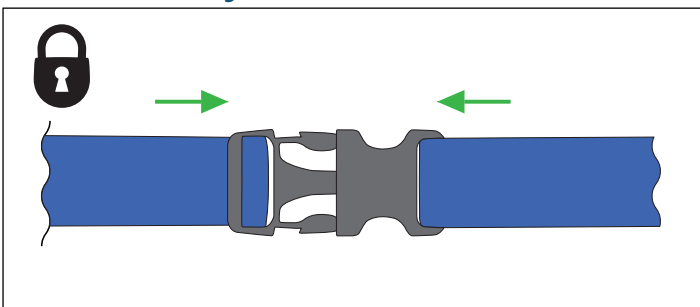
Attach belt to Sara Combilizer



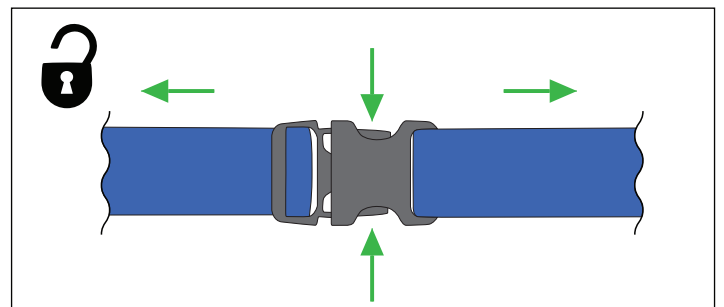
Remove belt from Sara Combilizer



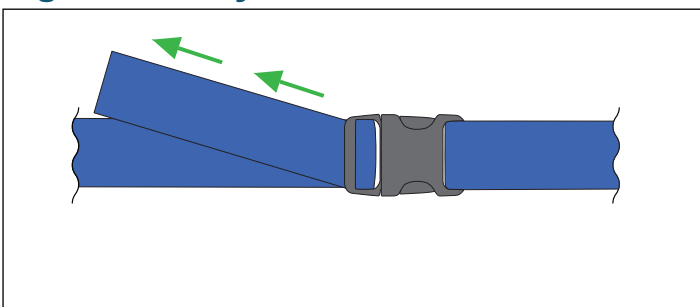
Buckle safety belt



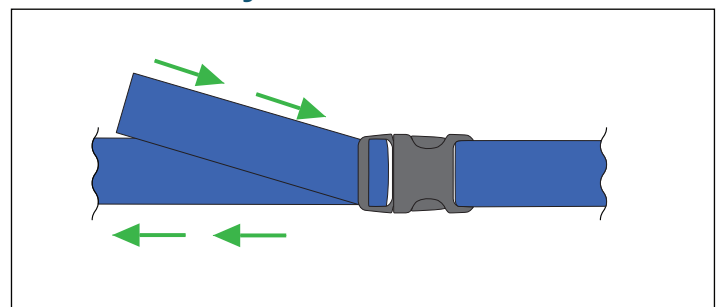
Unbuckle safety belt



Tighten safety belt



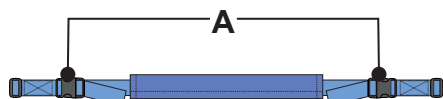
Loosen safety belt



Attach safety belts to patient

1 Chest belt

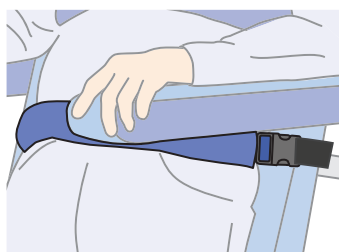
Blue attachment straps
Two safety buckles (A)



Position belt under patient's arms.
Buckle all safety buckles.
Do not tighten belt too much.

2 Hip belt

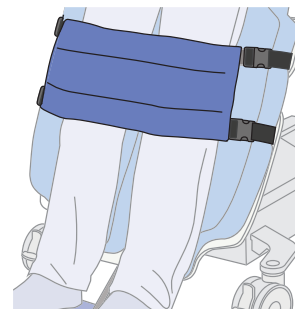
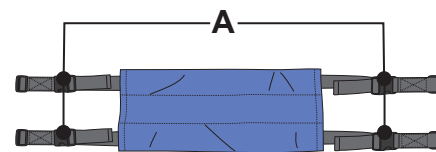
Blue attachment straps
Two safety buckles (A)



Position belt on patient's hip area.
Buckle all safety buckles.
Do not tighten belt too much.

3 Knee belt

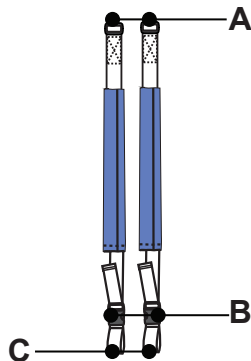
Black attachment straps
Four safety buckles (A)



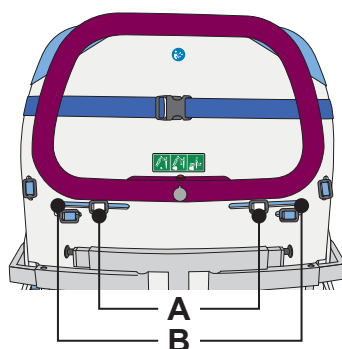
Position belt over patient's knee caps.
Buckle all safety buckles.

4 Shoulder belt

White attachment straps
Two slip locks (A)
Two safety buckles (B)
Two loops (C)



5 Shoulder belt



Insert the two slip locks (A)
through the upper slots (B).

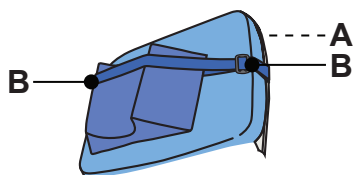
6 Shoulder belt



Position belts over patient's shoulders and
below chest belt (A).
Unbuckle and insert hip safety belt (B)
through the end loops (C) of shoulder belts.

7 Head belt

One safety buckle (A)
Two slip locks (B)



8 Head belt



Buckle belt on the back of mattress
(A). Pull belt through slip lock (B)
on both sides of pillow.

9

