

CPR release handle

Pull the CPR release handle located on either side of the bed to quickly lower the backrest.

Risk of entrapment

Brakes

To apply To release To apply To release

To apply To release To steer straight


The brakes should be applied at all times when the bed is stationary.

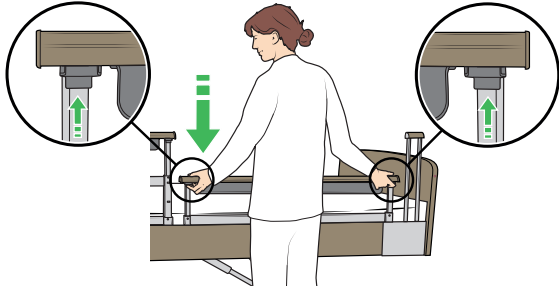
Calf section

To raise, lift the calf section until it locks at the desired height.


To lower, lift the calf section to maximum height, then lower it.

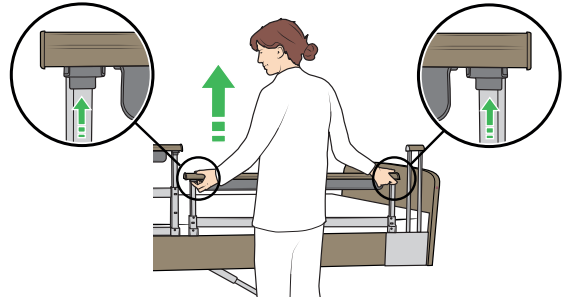
Telescopic bed rails

 Risk of entrapment.




To lower, press the buttons and lower the bed rail.

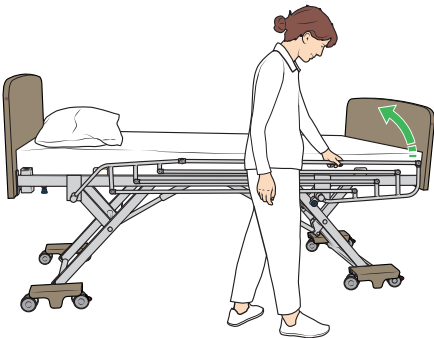
 Risk of falling. Make sure bed rail is locked in place.



To raise, press the buttons and lift the bed rail. Release the buttons at the desired position.

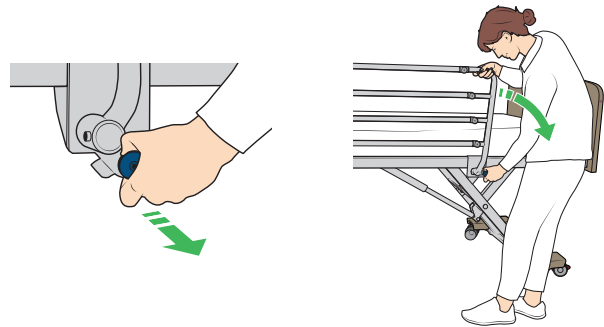
¾ Folding bed rails

 Risk of falling. Make sure bed rail is locked in place.



To raise, hold the top rail and lift the rail until it locks in place.

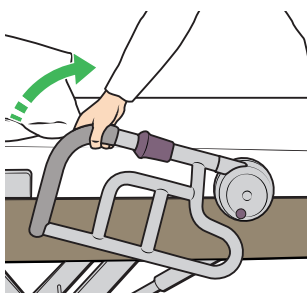
 Risk of pinching.



To lower, hold the top rail, pull out the spring lock and lower the rail.

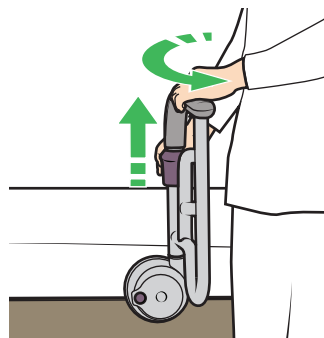
Mobility assist handle

Raised position



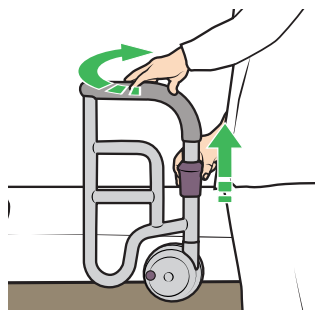
Grab the handle and rotate upwards until it locks in place.

Open position



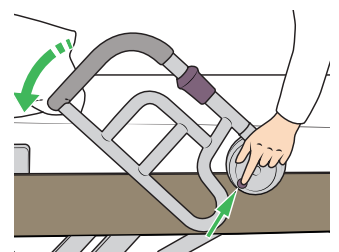
Pull up the plastic ring and rotate the handle until it locks in place.

Closed position



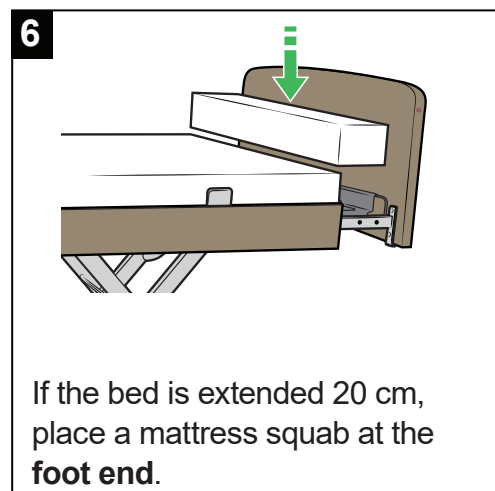
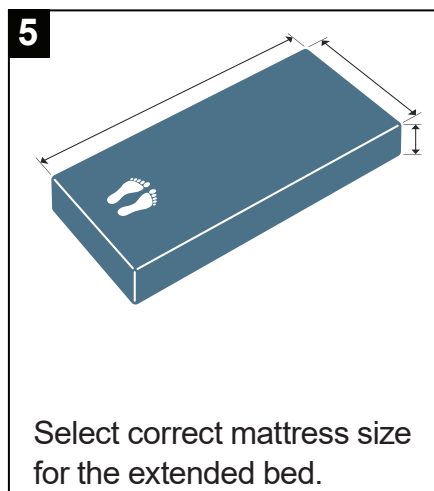
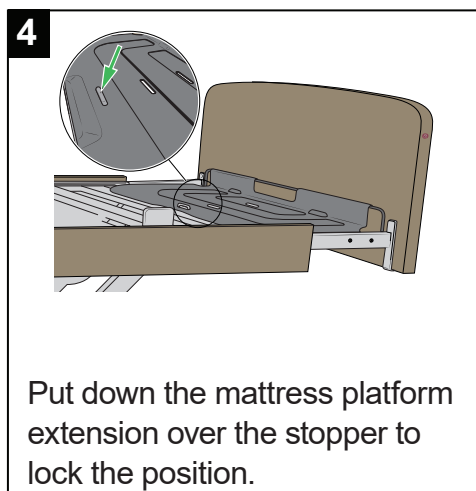
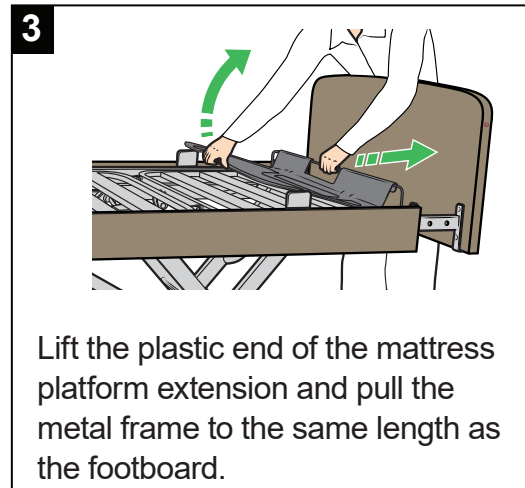
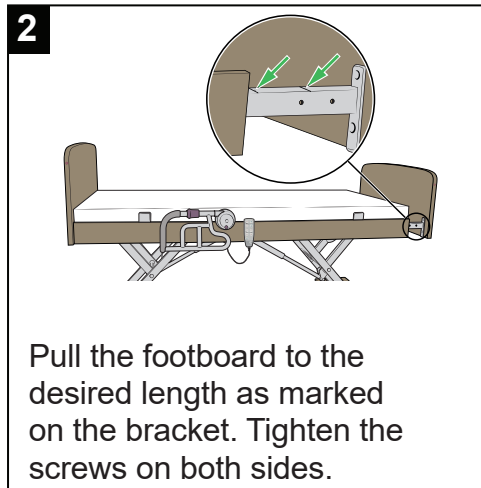
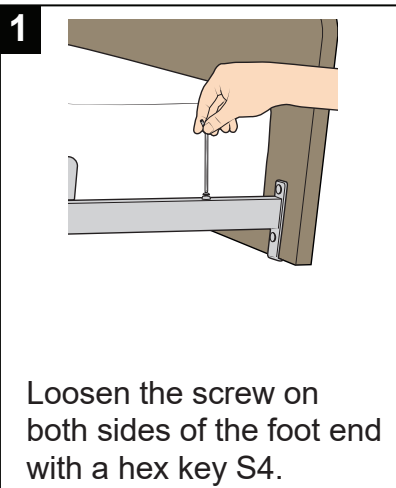
Pull up the plastic ring and rotate the handle until it locks in place.

Folded position

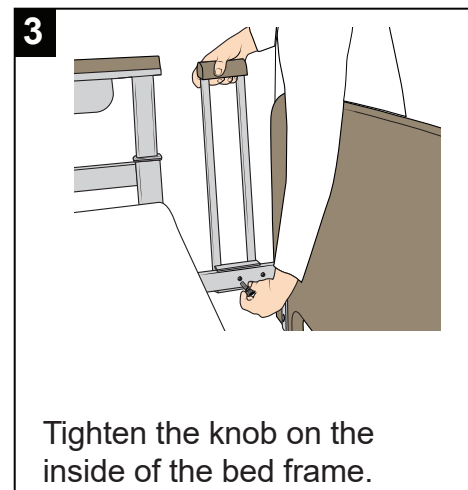
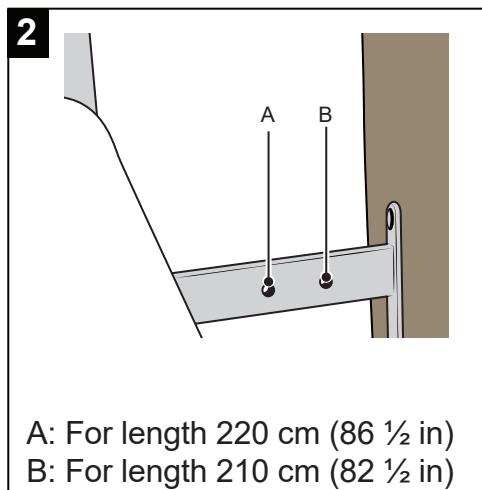
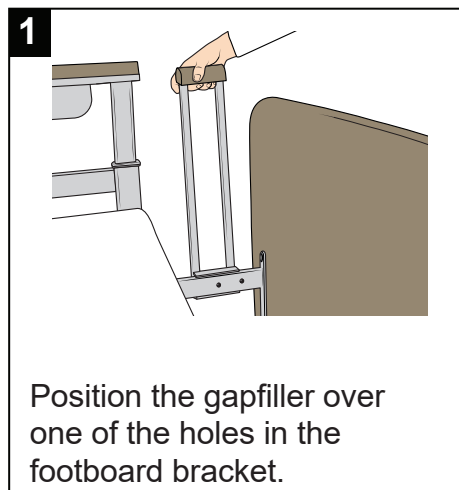


Push the button on the base of the handle.

Bed extension



Bed rail gapfillers



Always install gapfillers after extending the mattress platform if the bed is equipped with telescopic bed rails.