



The right
sling for the right
need every time

SLINGS

Wide range of slings for every day applications

Designed to provide safety and comfort

arjo



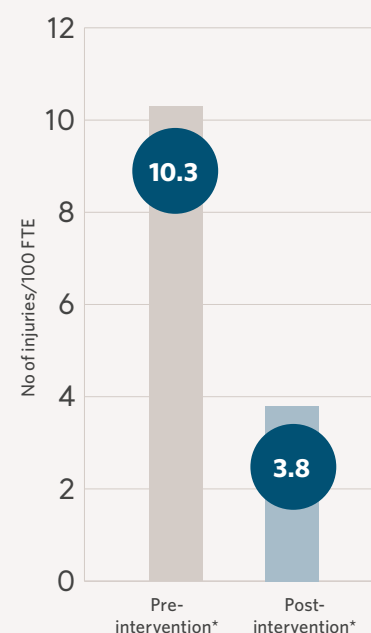
A relationship between patient lift systems and patient care quality

- Assistive equipment provides a more secure process for lifting, transferring, or repositioning tasks reducing the potential for patient injury (i.e. falls, skin tears, shoulder dislocations) as a consequence of a manual patient handling mishap.¹
- Patient mobility is an important clinical issue for improving independence and quality of life.²
- Use of safe patient handling mobility technology positively influences the quality of patient or resident care, mobilization, rehabilitation, and daily life.³

Patient lifts can reduce work related caregiver injuries

- The use of patient/resident handling equipment such as mechanical lifts with the appropriate sling is a core component of a safe patient handling program and advised by International and National Guidelines.⁴
- A biomechanical laboratory study and psychophysical evaluation showed that mechanical lifts:⁵
 - reduce the back-compressive forces on nursing personnel by an estimated 60%
 - remove two-thirds of the lifting activities per transfer
 - increase the residents' perceptions of comfort and security, as compared with being manually lifted
- Injury rates were shown to decrease with the use of mechanical patient lifts.⁶

Injury rates decreased with the use of mechanical patient lifts⁶



Relative risk 0.37 (95% CI 0.16-0.88)

* "Intervention" refers to one portable full body sling lift and two portable stand-up sling lifts.

Adapted from Li J et al, 2004.

Reducing the risk of pressure injury

- Regular repositioning, the use of the appropriate support surface and early mobility protocols are recommended to reduce the risk of pressure injury development.⁷
- Repositioning reduces the duration and magnitude of pressure over vulnerable areas of the body, and contributes to the patient's comfort, hygiene, dignity and functional ability.⁷
- The use of slings that may be left under the patient (taking into account clinical assessment) can increase work efficiency, reduce the risk of caregiver injury and support microclimate management.



Disposable or dedicated slings can reduce the risk of cross-contamination

- WHO guidelines recommend minimising cross-contamination by using disposable or dedicated slings.⁸
- Disposable repositioning aids can reduce the risk of cross-contamination and help reposition the patient in bed, including turning to and from the prone position.
- Patients who experience healthcare-acquired infections (HAIs) have longer hospital stays, utilise more healthcare resources and are at greater risk of readmission and death. Additionally, HAIs contribute to increased healthcare costs.⁹

Arjo has extensive experience making high performing slings

Providing the right sling for the individual patient type and need, is vital, to promote optimal safety and comfort.

As a manufacturer of both lifts and slings, Arjo offers extensive expertise in the total patient handling system.

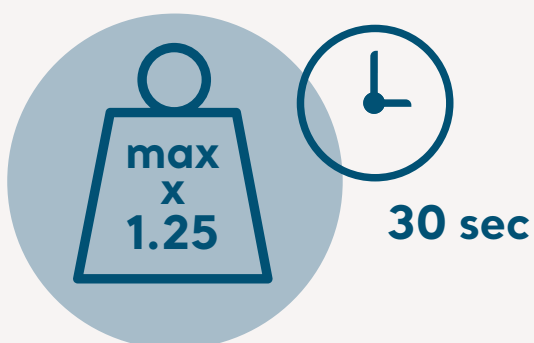


Our slings are carefully tested and verified to ensure durability and performance*

Once the slings are assembled, they are load tested in a specially constructed test rig, at 1.25 the maximum safe working load for a duration of 30 seconds. All washable slings are individually tested.

LOAD TEST

1.25 **maximum** safe working load



*ANSI Tables ANSI/ASQ Z1.4-2003 (R2013): Sampling Procedures and Tables for Inspection by Attributes

The steps taken when choosing the right sling

When choosing the right sling there are some important considerations to be made, that will impact the safety and comfort of both the patient and caregiver during transfer. Starting with the patient and his or her ability and need of support.



Seated transfer slings

A wide range of slings for every patient type and need. For use with ceiling and floor lifting devices to transfer patients in a seated position to and from bed, chair, bathroom, wheelchair and floor.



Paediatric



General purpose



Amputee



Bariatric

In-bed and lateral transfer

A wide range of slings and stretcher solutions to facilitate lateral transfers, frequent repositioning in bed including turning the patient to and from the prone position.



Stretcher solutions



Repositioning slings



Turning slings



Limb slings

Standing and walking slings

Slings to support standing, transfer and walking dedicated to our SARA range and walking slings to support patients with standing, stepping and walking practice with ceiling or floor lifts.



Standing Slings for Sara Plus



Slings for Sara Flex and Sara Steady



Walking sling for Sara Plus



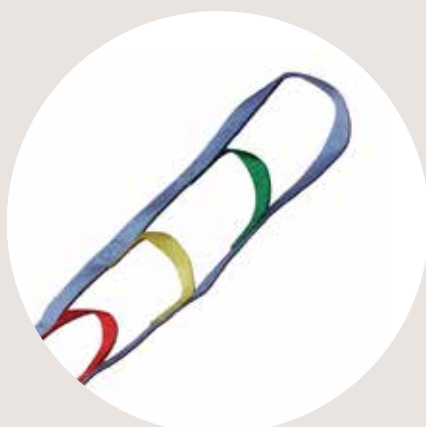
Ambulation slings

Attachment options



Clip slings

For use with our powered or manual dynamic positioning system, in combination with our passive floor lifts and our ceiling lifts.



Loop slings

For use with Arjo's 2-point or 4-point spreader bars or stretcher frames, for use with our ceiling lifts and passive floor lifts.

Material options



Washable

- Great durability and large selection of sling models for different patient needs.



Disposable for single patient use

- Meets infection control requirements.
- A trouble-free solution as no laundering is required.



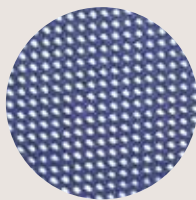
Wipeable

- Can be wiped clean and disinfected between patients.
- Minimises downtime as immediately available after cleaning for use between patients.

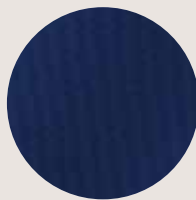
MATERIAL OPTIONS - WASHABLE



Knitted polyester fabric



Knitted polyester fabric - mesh



Premium knitted polyester fabric



High strength woven polycotton fabric



Woven polyester fabric (all-day)



Lightweight knitted polyester fabric - mesh

DISPOSABLE



Non-woven polypropylene fabric

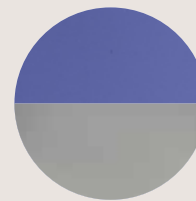


Woven polycotton fabric



High strength woven polycotton fabric

WIPEABLE



Polyurethane coated fabric

Disposable slings for single patient use



General purpose slings

- Seated transfers
- Clip or loop



Repositioning slings

- Repositioning and in-bed care tasks
- Standard and bariatric
- Loop



Limb slings

- In-bed care tasks for lifting limbs
- Clip or loop



Turning sling

- Repositioning and in-bed care tasks
- Loop



Soft stretcher sling

- Supine transfers
- Loop



Standing sling for Sara Flex and Sara Steady

- Standing transfers
- Clip



Standing sling for Sara Plus

- Standing transfers



Empowering mobility with sling solutions

Early Mobilisation

Therapists have reported that patient handling equipment increased their options for therapeutic activities and allowed them to mobilise patients earlier in the rehabilitation process compared to not having the equipment available.¹⁰



Rehabilitation

During the rehabilitation process, mobility assistive technologies can be seen as a 'mobility partner' to facilitate functional mobility, promote patient safety and reduce caregiver injury. It can also support caregivers to optimise moments of mobility throughout the care pathway.



Tailor made slings

Sometimes a patient's safety and comfort can only be assured by the provision of a customised sling.

Although Arjo's sling range cover most patients' needs, there are individual factors (height, body weight distribution, physical condition) that may mean a customised sling is the right solution.

Arjo offers a tailor made sling service where slings can be modified to meet specific patient needs. Modification options include altering dimensions, adding extra covering or padding, adding belts, adjustable head support and straps or pull handles to make positioning/handling easier.



Slide sheets

Why should you use slide sheets with slings?

- To prevent friction and shear on the patient's skin when repositioning in bed if not all of the body is elevated.
- To assist the caregiver to fit the sling in a bed or chair.
- To further aid with prone positioning in combination with repositioning slings facilitating easy positioning at the centre of the bed.



Arjo patient handling product areas

Ceiling lifts



Floor lifts



Standing and raising aids



Slings



Air assisted transfer



Slide sheets



1. Handle With Care®: The American Nurses Association's Campaign to Address Work-Related Musculoskeletal Disorders. <http://ojin.nursingworld.org/Main-MenuCategories/ANAMarketplace/ANAPeriodicals/OJIN/TableofContents/Volume92004/No3Sept04/HandleWithCare.html>. Accessed March 11th 2020.
2. Humrickhouse R, et al. The Ergonomics Open Journal 2016; 9:27-42.
3. Mary W. Matz, MSPH, CPE, CSPHP, Patient Handling and Mobility Assessments, a white paper. FACILITY GUIDELINES INSTITUTE (2019).
4. Matz M, Patient Handling and Mobility Assessments: A white Paper, Second Edition. The Facility Guidelines Institute. (2019) ISO/TR12296 (2012) Ergonomics - manual handling of people in the healthcare sector. International Standardisation Organisation.
5. Collins JW, et al. Inj Prev 2004; 10(4):201-211.
6. Li J, et al. Injury Prevention 2004; 10:212-216.
7. European Pressure Ulcer Advisory Panel, National Pressure Injury Advisory Panel and Pan Pacific Pressure Injury Alliance Prevention and Treatment of Pressure Ulcers/Injuries: Clinical Practice Guideline, 2019. Emily Haesler (Ed.). EPUAP/NPIAP/PPIA: 2019.
8. Clinical management of severe acute respiratory infection (SARI) when COVID-19 disease is suspected WHO Interim guidance March 2020.
9. Kelly M. Pyrek, Trends in Infection Prevention and Control: Experts Share Perspectives on Key Issues, viewed on June 22, 2020, <https://www.infectioncontroltoday.com/general-hais/trends-infection-prevention-and-control-experts-share-perspectives-key-issues>.
10. Cromie JE, Robertson VJ, Best MO: Work-related musculoskeletal disorders in physical therapists: prevalence, severity, risks, and responses. PhysTher 2000, 80(4):336-351.

Dec 2021. Only Arjo designed parts, which are designed specifically for the purpose, should be used on the equipment and products supplied by Arjo. As our policy is one of continuous development we reserve the right to modify designs and specifications without prior notice. ® and ™ are trademarks belonging to the Arjo group of companies.
© Arjo, 2021

At Arjo, we believe that empowering movement within healthcare environments is essential to quality care. Our products and solutions are designed to promote a safe and dignified experience through patient handling, medical beds, personal hygiene, disinfection, diagnostics, and the prevention of pressure injuries and venous thromboembolism. With over 6000 people worldwide and 60 years caring for patients and healthcare professionals, we are committed to driving healthier outcomes for people facing mobility challenges.

Arjo AB · Hans Michelsensgatan 10 · 211 20 Malmö · Sweden · +46 10 335 4500

www.arjo.com